



Multi-Domain Assessment of Graduate Competencies through Exit OSCE and Personalised Competency mapping



Mahalakshmi Venkatesan Natrajan¹, Rajkumar E², Navin Puttum V³

Dean Health Professions' Education, Arupadai Veedu Medical College & Hospital¹, drmahavn@gmail.com 9244436037,
Skills lab Coordinator, AVMC², Asst Professor, Emergency Medicine, AVMC³, Puducherry

Background

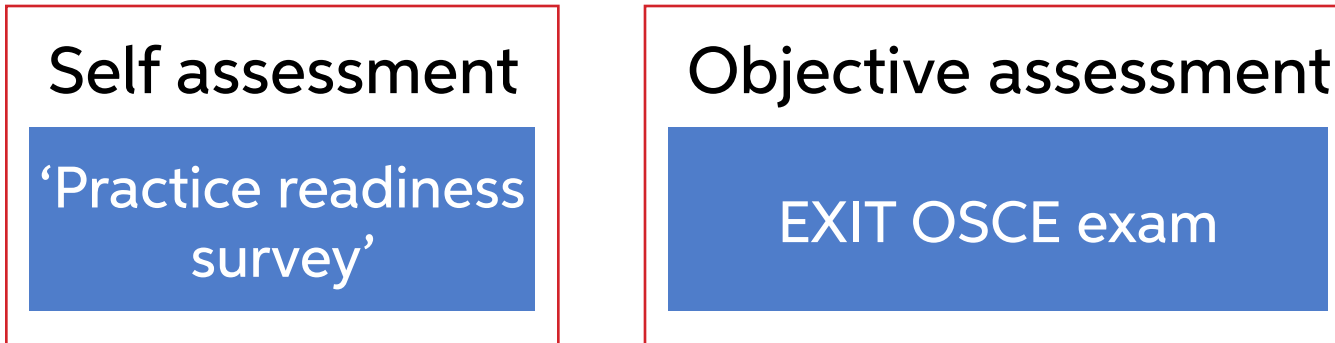
- Competency-Based Medical Education (CBME) focuses on equipping graduates with essential skills aligned with regulatory and societal standards.
- We implemented an Exit OSCE for outgoing medical graduates, providing a structured assessment of core clinical competencies.

Objectives

- Assess core competencies (procedural skills, medical knowledge, critical thinking, communication, professionalism).
- Create personalized competency maps for student reflection and progression.
- Leverage assessment data for quality improvement in medical education and CRMI training.

Methods

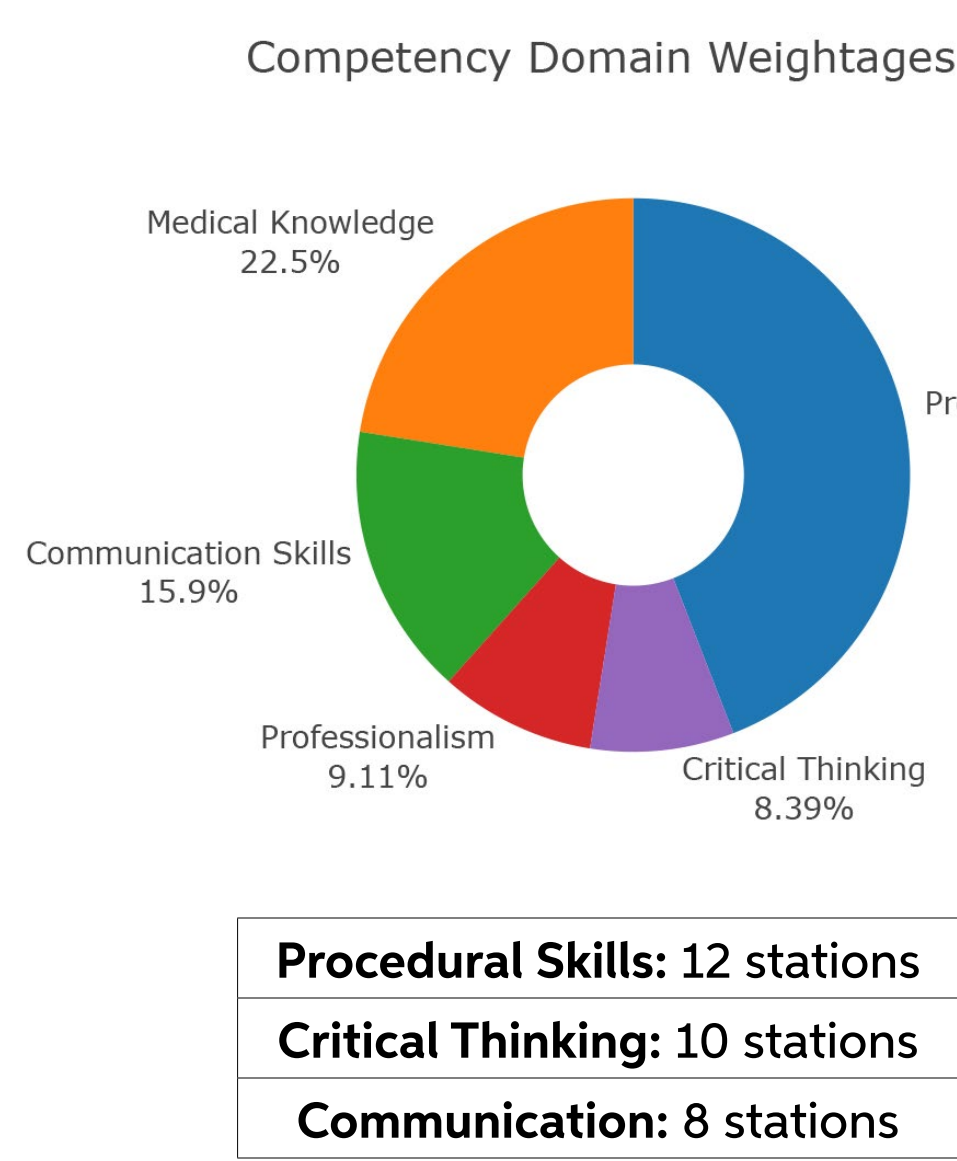
1. Tools for assessment of clinical competency domains



2. OSCE Design

- 30 observed stations
- based on NMC CRMI 2021 guidelines
- each station of 6 min duration
- including 1 min feedback

3. Clinical Competencies assessed



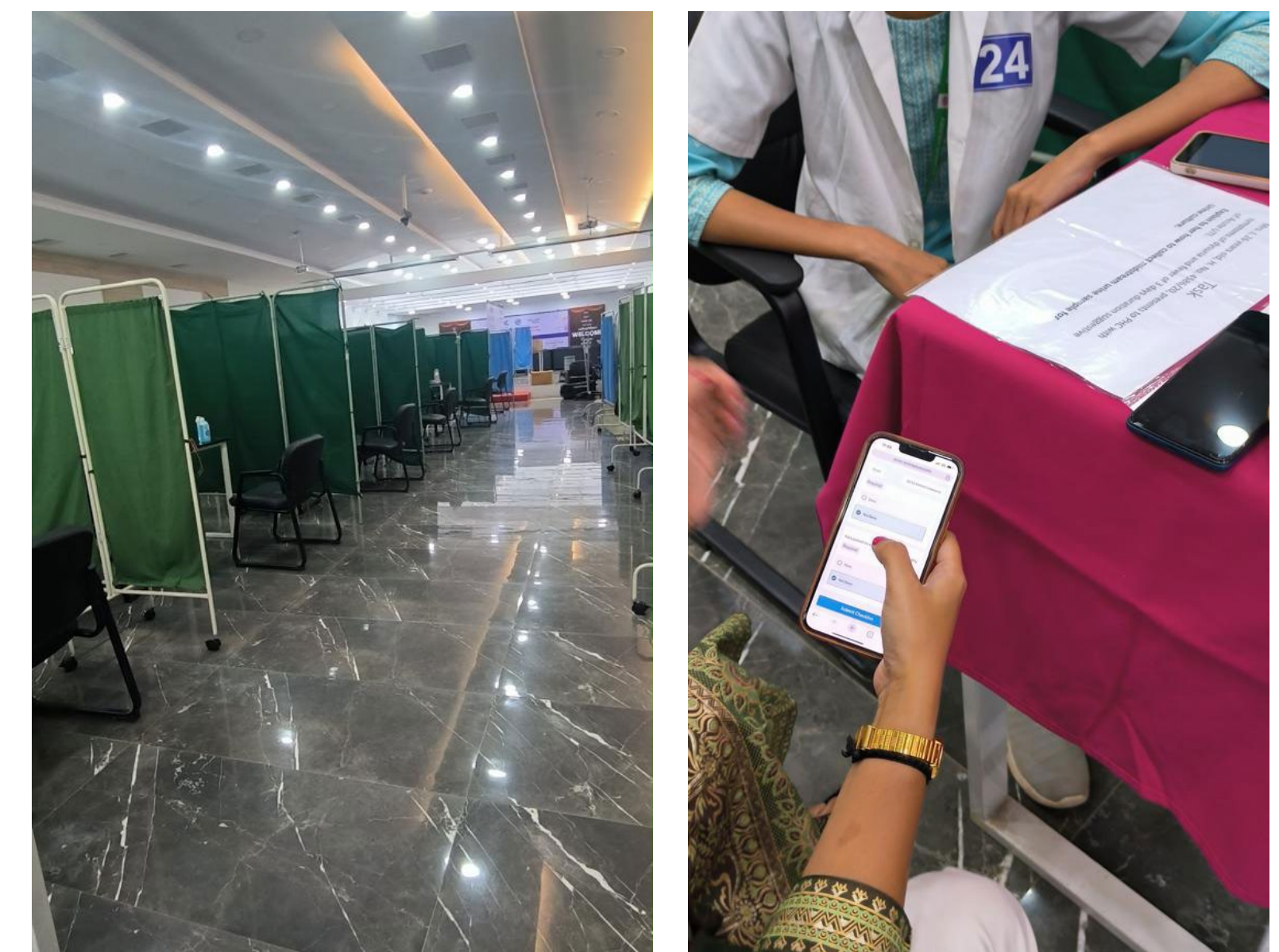
4. OSCE flow

Haemorrhage control	Informed consent	Oxygen administration
Bag-mask ventilation	Patient education- sample collection	Suturing
Kangaroo mother care	Patient education - Nutrition	Handling lab requests
Urinary catheterisation	Counseling for family planning	Prescription writing
Neonatal Resuscitation	Patient education - Post surgical care	BLS
ACLS Defibrillation	Patient education - Drug administration	Splinting an injured limb
NGT insertion	Anterior Nasal Packing	Nebulisation
Post care Vaccination	PAP smear	Drug delivery Use of MDI
Handing over	Setting up a IV infusion	C-spine stabilisation
De-addiction counseling	Blood grouping	Patient History AMI

5. OSCE Set up



OSCE in Progress



Stations

SimCapture

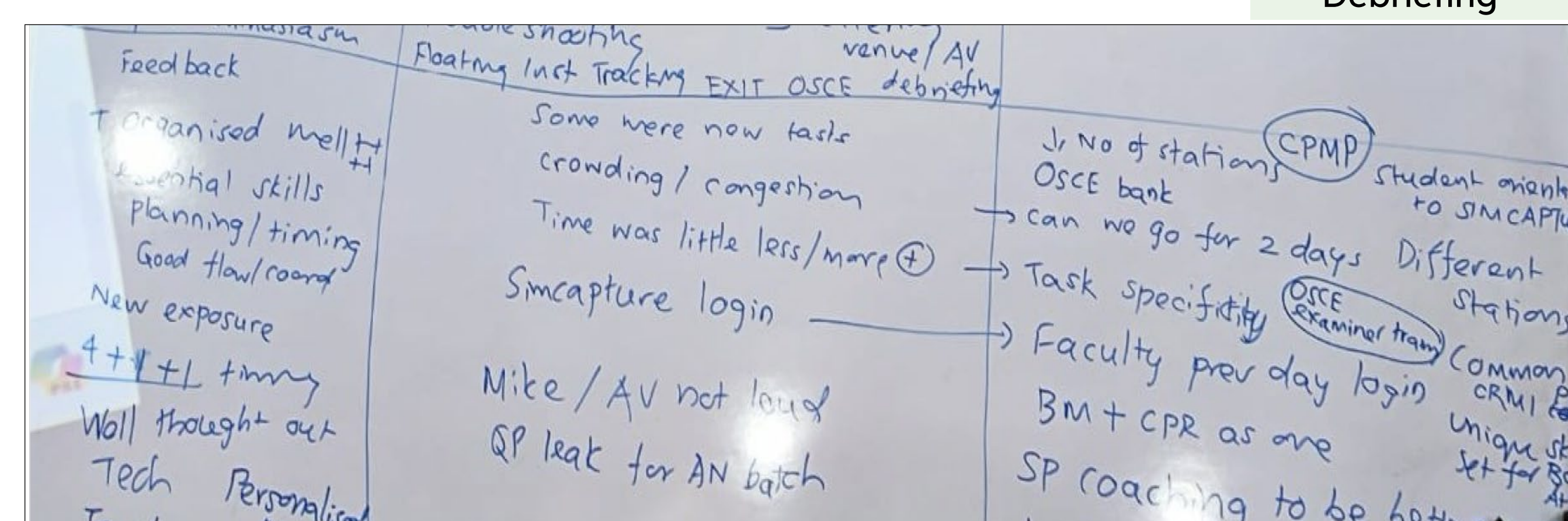
6. Human Resources

5 members core team for OSCE design		
15 departmental coordinators for station development		
70 CRMIs as Participants	30 faculty as examiners	10 Standardized patients (SPs)

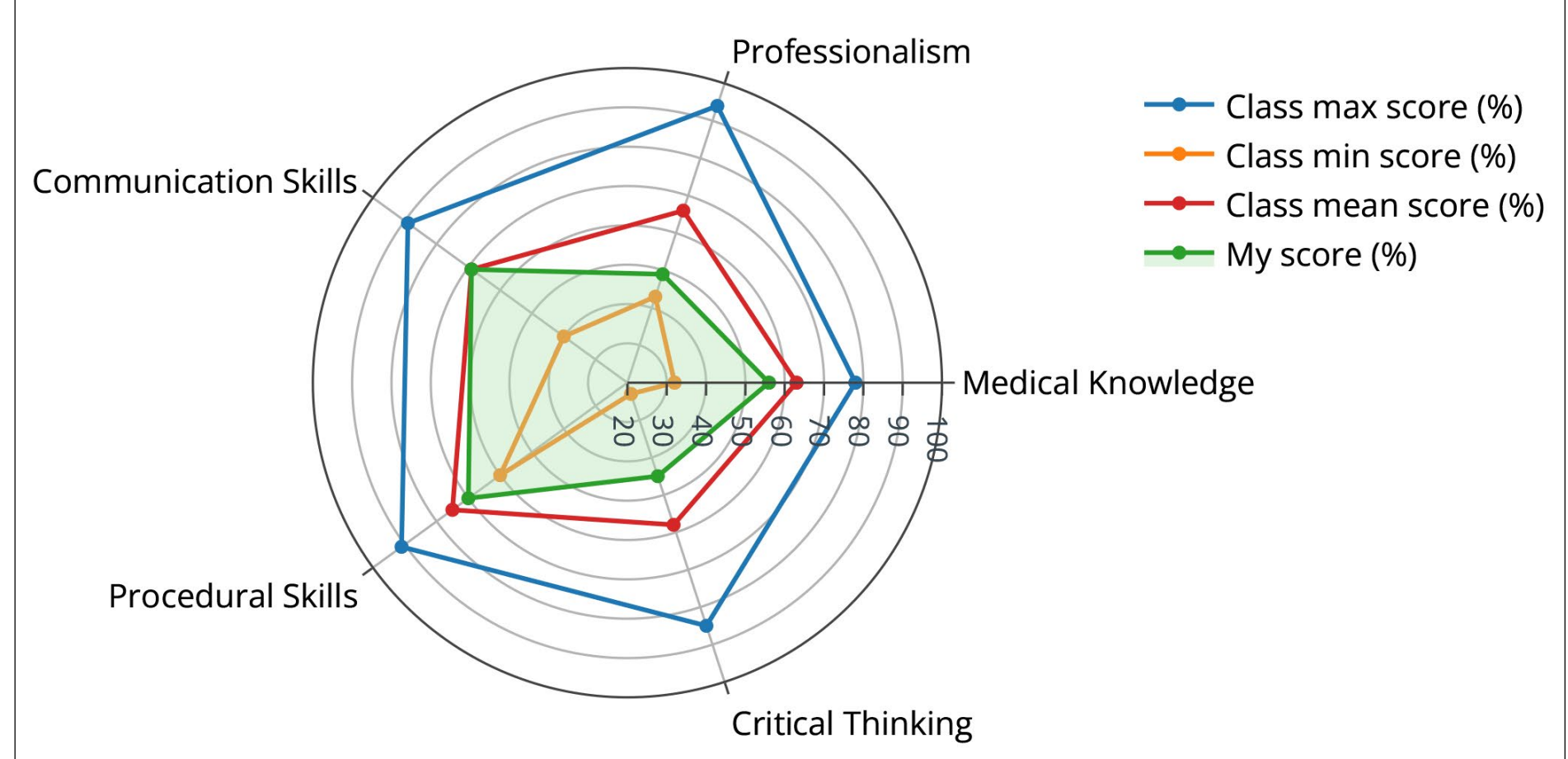
7. Quality Measures

Validated checklists	Examiner/ SP training
Student orientation	Use of SIMCAPTURE for data collection

8. Post-Exam Feedback

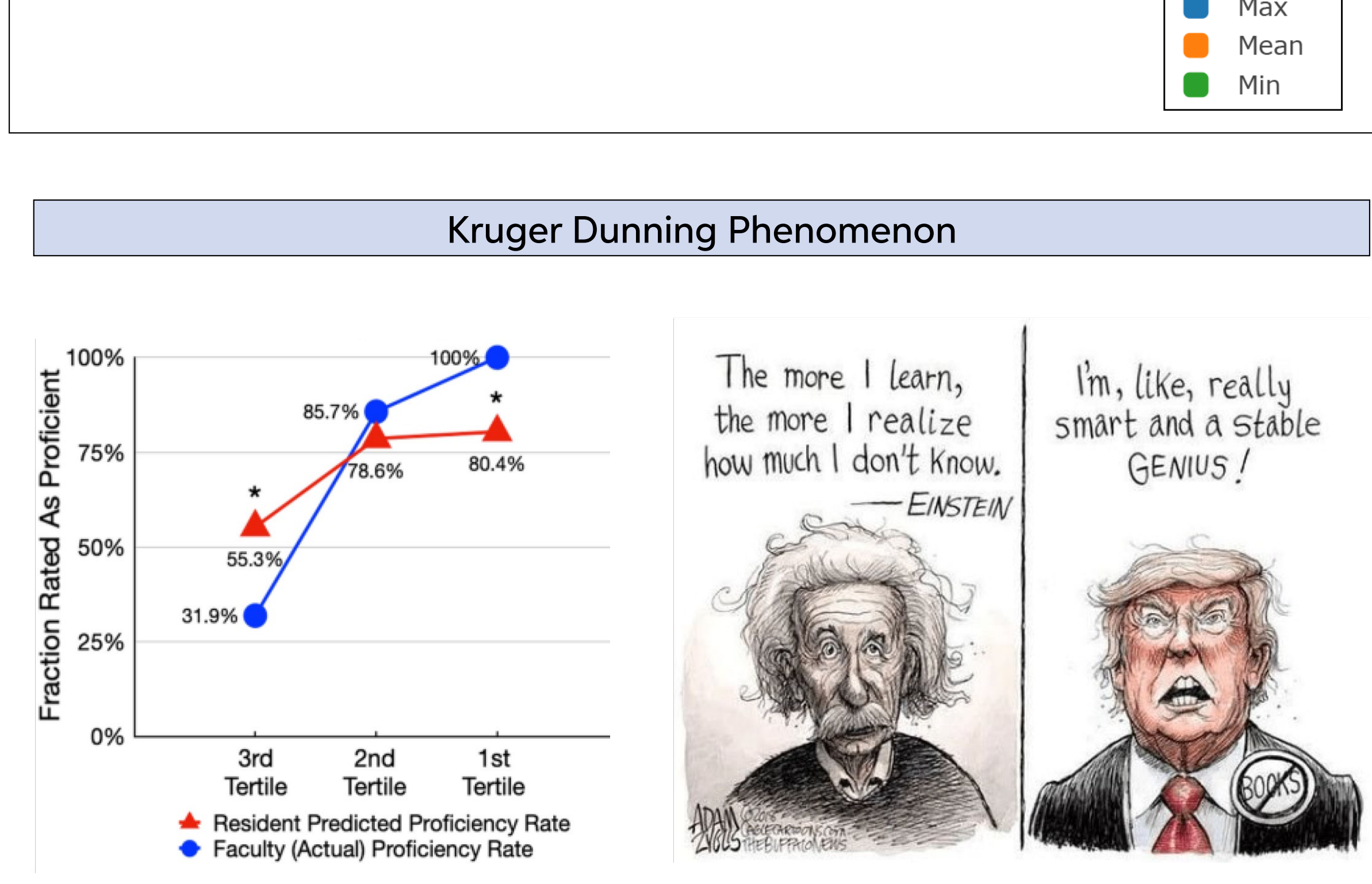
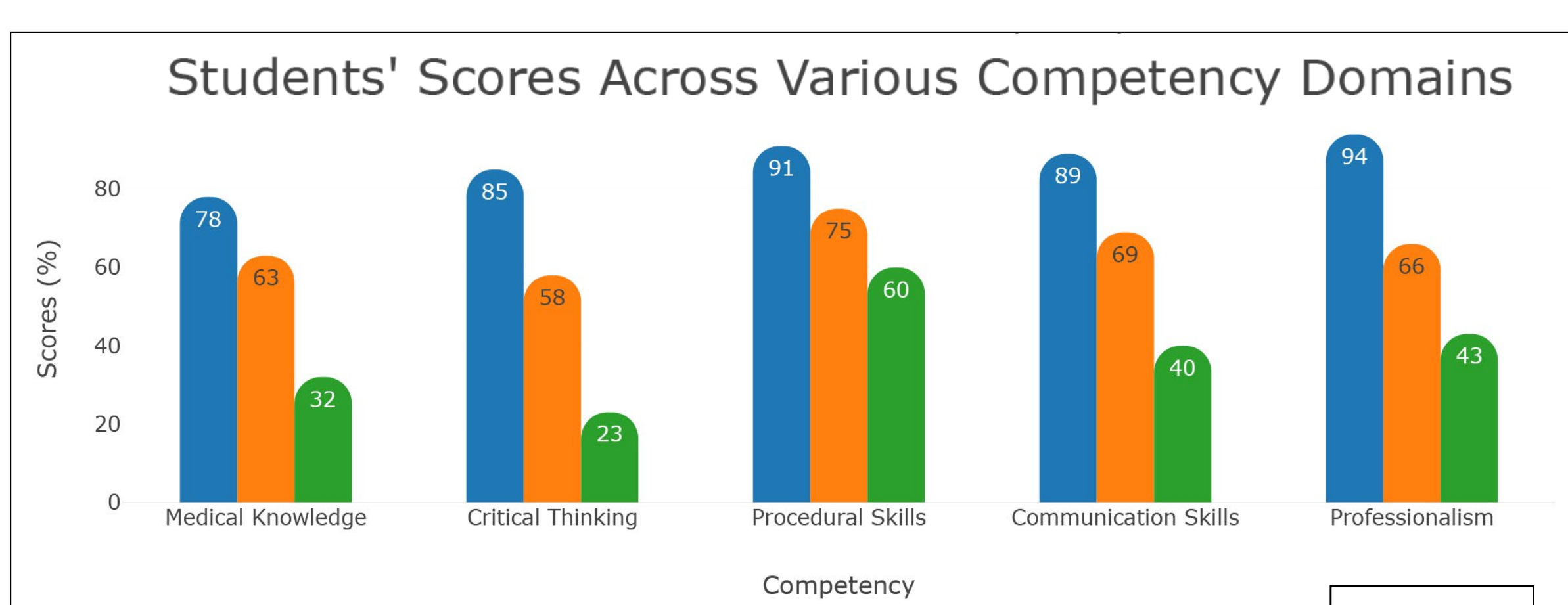
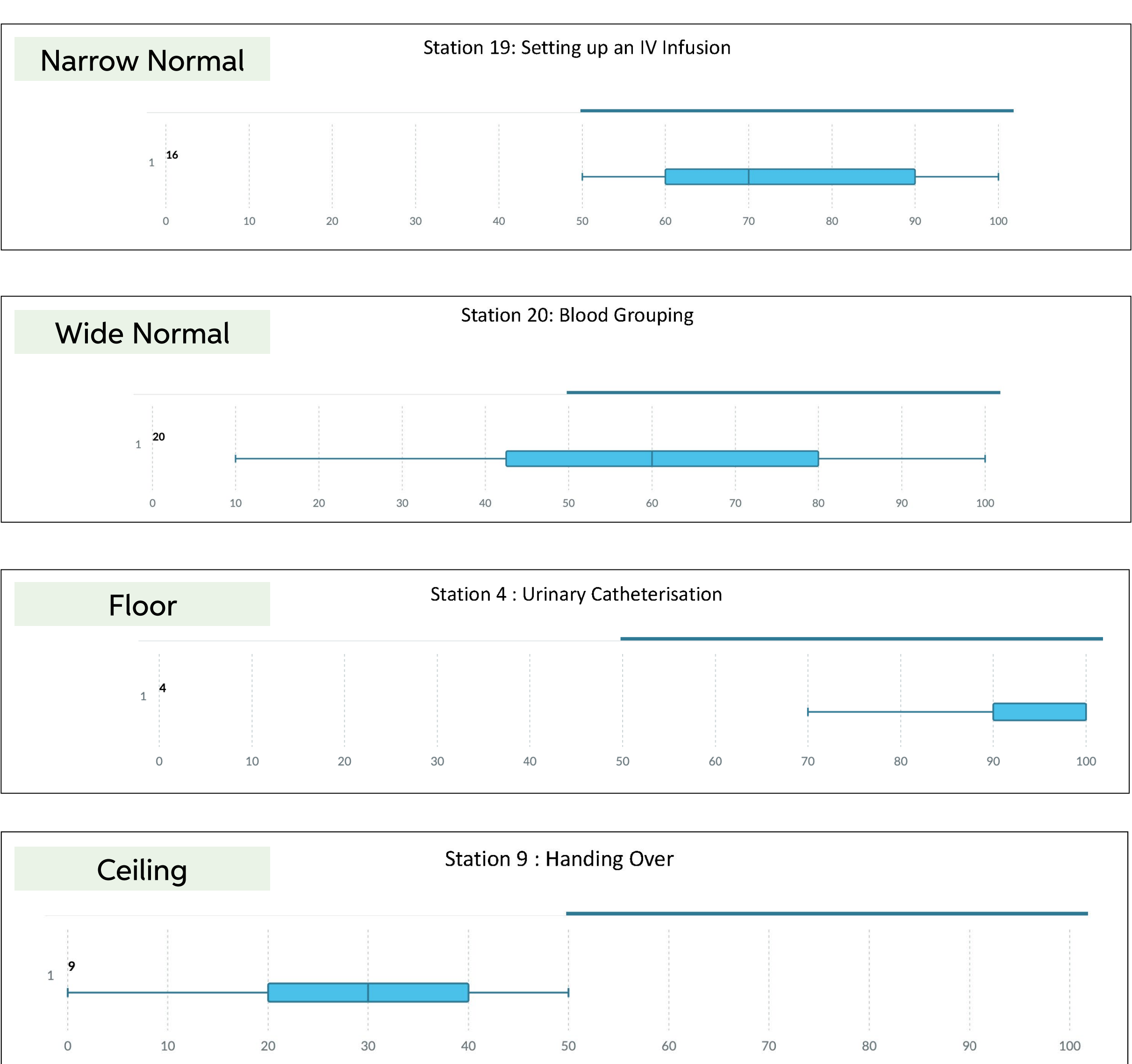


Personalized competency maps created for each student



AI Based Manikin

Results



Discussion

- Self-Assessment Correlation:** Strong alignment with observed performance over a wide range
- Procedural Skills:** > 90% proficiency
- Critical Thinking & Communication:** Varied scores, indicating areas for further development
- Perception:** Faculty and students viewed the Exit OSCE as comprehensive and impactful
- Competency Maps:** Highly valued for self-reflection and ongoing improvement

Enablers	Challenges	Sustainability
Expertise on OSCE & Institutional support	Faculty development to ensure reliability and validity	Creation of OSCE bank
Well equipped skill lab	Students' training	Data sharing
Use of technology	Time & efforts required to organise logistics	Coding to analyse data

Conclusion

- The Exit OSCE, supported by personalized feedback, is effective for evaluating graduate readiness. This model aligns curriculum and assessment with clinical practice, promoting quality enhancement and continuous curriculum improvement.